

## ALMA SPECTROSCOPIC SURVEY IN THE HUBBLE ULTRA DEEP FIELD: SURVEY DESCRIPTION

FABIAN WALTER<sup>1,2,3</sup>, ROBERTO DECARLI<sup>1</sup>, MANUEL ARAVENA<sup>4</sup>, CHRIS CARILLI<sup>3,5</sup>, RYCHARD BOUWENS<sup>6</sup>, ELISABETE DA CUNHA<sup>7,8</sup>, EMANUELE DADDI<sup>9</sup>, R. J. IVisON<sup>10,11</sup>, DOMINIK RIECHERS<sup>12</sup>, IAN SMAL<sup>13</sup>, MARK SWINBANK<sup>13</sup>, AXEL WEISS<sup>14</sup>, TIMO ANGUITA<sup>15,16</sup>, ROBERTO ASSEF<sup>4</sup>, ROLAND BACON<sup>17</sup>, FRANZ BAUER<sup>18,19,20</sup>, ERIC F. BEL<sup>21</sup>, FRANK BERTOLDI<sup>22</sup>, SCOTT CHAPMAN<sup>23</sup>, LUIS COLINA<sup>24</sup>, PAULO C. CORTES<sup>25,26</sup>, PIERRE COX<sup>27</sup>, MARK DICKINSON<sup>27</sup>, DAVID ELBAZ<sup>9</sup>, JORGE GÓNZALEZ-LÓPEZ<sup>28</sup>, EDO IBAR<sup>29</sup>, HANAÉ INAMI<sup>17</sup>, LEOPOLDO INFANTE<sup>28</sup>, JACQUELINE HODGE<sup>6</sup>, ALEX KARIM<sup>22</sup>, OLIVIER LE FEVRE<sup>30</sup>, BENJAMIN MAGNELLI<sup>22</sup>, ROBERTO NERI<sup>31</sup>, PASCAL OESCH<sup>32</sup>, KAZUAKI OTA<sup>33,5</sup>, GERGÖ POPPING<sup>10</sup>, HANS-WALTER RIX<sup>1</sup>, MARK SARGENT<sup>34</sup>, KARTIK SHETH<sup>35</sup>, ARJEN VAN DER WEL<sup>1</sup>, PAUL VAN DER WERF<sup>6</sup>, JEFF WAGG<sup>36</sup>

<sup>1</sup>Max-Planck Institut für Astronomie, Königstuhl 17, D-69117, Heidelberg, Germany. E-mail: [walter@mpia.de](mailto:walter@mpia.de)

<sup>2</sup>Astronomy Department, California Institute of Technology, MC105-24, Pasadena, California 91125, USA

<sup>3</sup>National Radio Astronomy Observatory, Pete V. Domenici Array Science Center, P.O. Box O, Socorro, NM, 87801, USA

<sup>4</sup>Núcleo de Astronomía, Facultad de Ingeniería, Universidad Diego Portales, Av. Ejército 441, Santiago, Chile

<sup>5</sup>Cavendish Laboratory, University of Cambridge, 19 J J Thomson Avenue, Cambridge CB3 0HE, UK

<sup>6</sup>Leiden Observatory, Leiden University, PO Box 9513, NL2300 RA Leiden, The Netherland

<sup>7</sup>Centre for Astrophysics and Supercomputing, Swinburne University of Technology, Hawthorn, Victoria 3122, Australia

<sup>8</sup>Research School of Astronomy and Astrophysics, Australian National University, Canberra, ACT 2611, Australia

<sup>9</sup>Laboratoire AIM, CEA/DSM-CNRS-Universite Paris Diderot, Irfu/Service d'Astrophysique, CEA Saclay, Orme des Merisiers, 91191 Gif-sur-Yvette cedex, France

<sup>10</sup>European Southern Observatory, Karl-Schwarzschild-Strasse 2, 85748, Garching, Germany

<sup>11</sup>Institute for Astronomy, University of Edinburgh, Royal Observatory, Blackford Hill, Edinburgh EH9 3HJ

<sup>12</sup>Cornell University, 220 Space Sciences Building, Ithaca, NY 14853, USA

<sup>13</sup>Centre for Extragalactic Astronomy, Department of Physics, Durham University, South Road, Durham, DH1 3LE, UK

<sup>14</sup>Max-Planck-Institut für Radioastronomie, Auf dem Hügel 69, 53121 Bonn, Germany

<sup>15</sup>Departamento de Ciencias Físicas, Universidad Andres Bello, Fernandez Concha 700, Las Condes, Santiago, Chile

<sup>16</sup>Millennium Institute of Astrophysics, Chile

<sup>17</sup>Université Lyon 1, 9 Avenue Charles André, 69561 Saint Genis Laval, France

<sup>18</sup>Instituto de Astrofísica, Facultad de Física, Pontificia Universidad Católica de Chile Av. Vicuña Mackenna 4860, 782-0436 Macul, Santiago, Chile

<sup>19</sup>Millennium Institute of Astrophysics (MAS), Nuncio Monseñor Sótero Sanz 100, Providencia, Santiago, Chile

<sup>20</sup>Space Science Institute, 4750 Walnut Street, Suite 205, Boulder, CO 80301, USA

<sup>21</sup>Department of Astronomy, University of Michigan, 1085 South University Ave., Ann Arbor, MI 48109, USA

<sup>22</sup>Argelander Institute for Astronomy, University of Bonn, Auf dem Hügel 71, 53121 Bonn, Germany

<sup>23</sup>Dalhousie University, Halifax, Nova Scotia, Canada

<sup>24</sup>ASTRO-UAM, UAM, Unidad Asociada CSIC, Spain

<sup>25</sup>Joint ALMA Observatory - ESO, Av. Alonso de Córdova, 3104, Santiago, Chile

<sup>26</sup>National Radio Astronomy Observatory, 520 Edgemont Rd, Charlottesville, VA, 22903, USA

<sup>27</sup>Steward Observatory, University of Arizona, 933 N. Cherry St., Tucson, AZ 85721, USA

<sup>28</sup>Instituto de Astrofísica, Facultad de Física, Pontificia Universidad Católica de Chile Av. Vicuña Mackenna 4860, 782-0436 Macul, Santiago, Chile

<sup>29</sup>Instituto de Física y Astronomía, Universidad de Valparaíso, Avda. Gran Bretaña 1111, Valparaíso, Chile

<sup>30</sup>Aix Marseille Universite, CNRS, LAM (Laboratoire d'Astrophysique de Marseille), UMR 7326, F-13388 Marseille, France

<sup>31</sup>IRAM, 300 rue de la piscine, F-38406 Saint-Martin d'Hères, France

<sup>32</sup>Astronomy Department, Yale University, New Haven, CT 06511, USA

<sup>33</sup>Kavli Institute for Cosmology, University of Cambridge, Madingley Road, Cambridge CB3 0HA, UK

<sup>34</sup>Astronomy Centre, Department of Physics and Astronomy, University of Sussex, Brighton, BN1 9QH, UK

<sup>35</sup>NASA Headquarters, Washington DC, 20546-0001, USA

<sup>36</sup>SKA Organization, Lower Withington Macclesfield, Cheshire SK11 9DL, UK

## ABSTRACT

We present the rationale for and the observational description of ASPECS: The ALMA SPECTroscopic Survey in the *Hubble* Ultra-Deep Field (UDF), the cosmological deep field that has the deepest multi-wavelength data available. Our overarching goal is to obtain an unbiased census of molecular gas and dust continuum emission in high-redshift ( $z > 0.5$ ) galaxies. The  $\sim 1'$  region covered within the UDF was chosen to overlap with the deepest available imaging from *HST*. Our ALMA observations consist of full frequency scans in band 3 (84–115 GHz) and band 6 (212–272 GHz) at approximately uniform line sensitivity ( $L'_{\text{CO}} \sim 2 \times 10^9 \text{ K km s}^{-1} \text{ pc}^2$ ), and continuum noise levels of  $3.8 \mu\text{Jy beam}^{-1}$  and  $12.7 \mu\text{Jy beam}^{-1}$ , respectively. The molecular surveys cover the different rotational transitions of the CO molecule, leading to essentially full redshift coverage. The [C II] emission line is also covered at redshifts  $6.0 < z < 8.0$ . We present a customized algorithm to identify line candidates in the molecular line scans, and quantify our ability to recover artificial sources from our data. Based on whether multiple CO lines are detected, and whether optical spectroscopic redshifts as well as optical counterparts exist, we constrain the most likely line identification. We report 10 (11) CO line candidates in the 3 mm (1 mm) band, and our statistical analysis shows that  $< 4$  of these (in each band) are likely spurious. Less than 1/3 of the total CO flux in the low-J CO line candidates are from sources that are not associated with an optical/NIR counterpart. We also present continuum maps of both the band 3 and band 6 observations. The data presented here form the basis of a number of dedicated studies that are presented in subsequent papers.

*Keywords:* galaxies: evolution — galaxies: ISM — galaxies: star formation — galaxies: statistics — submillimeter: galaxies — instrumentation: interferometers

## 1. INTRODUCTION

Characterizing the molecular gas content of distant galaxies is essential in order to understand the evolution of the cosmic star formation rate density (Madau & Dickinson 2014), and the build-up of stellar mass (Bell et al. 2003) throughout cosmic time (Carilli & Walter 2013). A unique way to fully characterize the molecular gas content in galaxies in the early universe is through spectral line scans in well-studied cosmological deep fields. In comparison to targeted observations of individual galaxies, spectral scans have the advantage that molecular gas reservoirs can be characterized without pre-selection through other information (e.g., stellar mass, star-formation rate). Such spectral line scans can also potentially reveal the presence of gas-rich ‘dark’ galaxies, i.e., galaxies that are invisible in the optical wavebands, and that would not be selected as targets to search for molecular gas emission (e.g., Walter et al. 2012). In a sense, spectral line scans follow the spirit of the original *HST* deep fields (e.g., Williams et al. 1996; Beckwith et al. 2006), as essentially no prior knowledge/selection based on galaxy properties enters the choice of field.

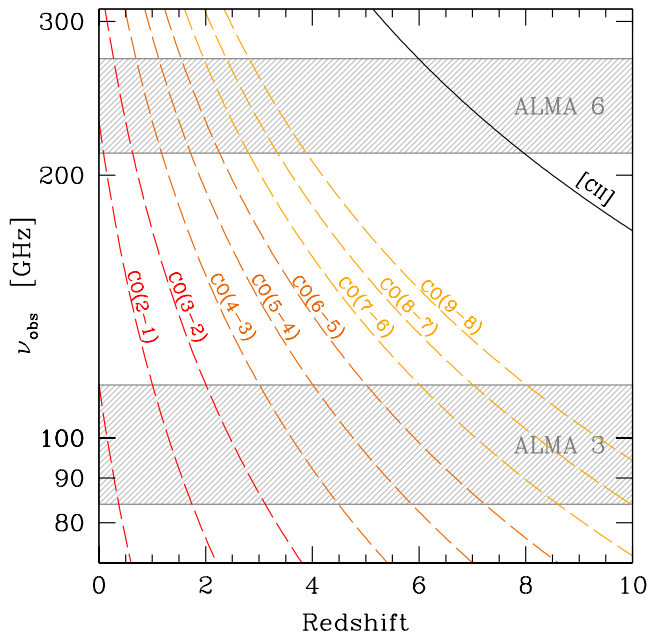
As the main constituent of the molecular gas in galaxies, molecular hydrogen ( $\text{H}_2$ ), is too weak to be detected, the next most abundant tracer is typically used to measure the molecular gas content:  $^{12}\text{CO}$  (hereafter: CO). Although this molecule is  $10^4$  times less abundant, the line can be detected in various environments. As a consequence, this molecule has been used at low and high

redshift to measure gas masses and kinematics. The CO line emission is observed in various rotational transitions in galaxies (e.g., Carilli & Walter 2013). The rotational ground-state ( $J=1-0$ ) of CO is at 115.271 GHz, and the higher rotational states ( $J > 1$ ) are approximately equally spaced by that frequency<sup>1</sup>. The amount of high-J emission depends on the *a priori* unknown excitation of the molecular gas. Nevertheless, full frequency scans in the lowest frequency ALMA bands cover CO emission at essentially all redshifts (see Fig. 1).

We here present the rationale for and the observational description of ASPECS: The ALMA SPECTroscopic Survey in the *Hubble* Ultra-Deep Field (UDF). This paper is structured as follows: Sec. 2 summarizes our field choices, as well as the observations and data reduction. In Sec. 3 we describe our methodology to identify line candidates in our data cubes, and present the continuum maps of both the band 3 and band 6 observations. In Sec. 4 we compare our findings to simple expectations based on previous multi-wavelength analysis of the galaxies in the field. We present our summary in Sec. 5.

A number of accompanying papers build on the data presented in this paper (hereafter: *Paper I*). In *Paper II* (Aravena et al. 2016a) we analyse the continuum information (mostly based on the band 6 observations);

<sup>1</sup> In reality, the spacing changes slightly as the dipole moment changes for the higher transitions as a result of centrifugal forces.



**Figure 1.** CO and [CII] redshift coverage of our molecular line scans at 1mm and 3mm. See Table 1 for the exact redshift ranges of each transition. The 1mm+3mm synergy provides continuous CO redshift coverage at virtually any redshift, with only a tiny gap at  $0.6309 < z < 0.6950$ . The [CII] emission line is covered in the redshift range  $6 < z < 8$  and is discussed in *Paper V*

in *Paper III* (Decarli et al. 2016a) we discuss the implications for CO luminosity functions and the redshift evolution of the cosmic molecular gas density; in *Paper IV* (Decarli et al. 2016b) we examine the properties of those galaxies in the UDF that show bright CO emission; in *Paper V* (Aravena et al. 2016b) we search for [CII] emitters; in *Paper VI* (Bouwens et al. 2016) we investigate where high-redshift galaxies from ASPECS lie in relation to known IRX- $\beta$  and IRX-stellar mass relationships, and finally, in *Paper VII* (Carilli et al. 2016) we describe implications on intensity mapping experiments. Throughout the paper we assume a standard cosmology with  $H_0 = 70 \text{ km s}^{-1} \text{ Mpc}^{-1}$ ,  $\Omega_m = 0.3$  and  $\Omega_\Lambda = 0.7$ , broadly in agreement with the most recent *Planck* measurements (Planck Collaboration 2015). Where required, we refer to the AB photometric system (Oke & Gunn 1973) for the magnitude definitions and to Chabrier (2003) for the stellar initial mass function.

## 2. OBSERVATIONS AND DATA REDUCTION

### 2.1. Choice of Frequencies

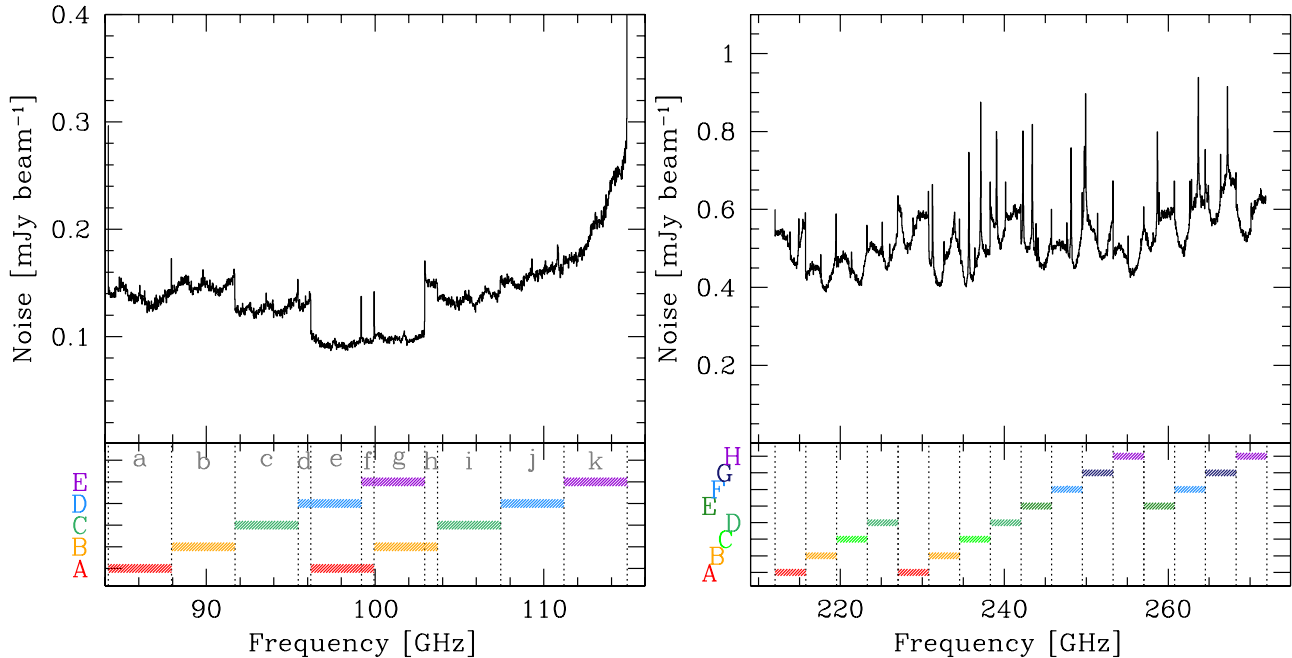
Given the unknown excitation of the molecular gas in a given high-redshift galaxy, when inferring  $\text{H}_2$  masses, it is advantageous to observe the CO emission in the lowest rotational state possible to minimize excitation corrections, modulo the impact of the Cosmic Microwave Background (da Cunha et al. 2013b). With ALMA,

**Table 1.** Lines and corresponding redshift ranges covered in the molecular line scans. For the 3mm data, comoving volume and volume-weighted average redshifts are computed within the primary beam, accounting for its frequency dependence. For the 1mm data, the area is fixed ( $3700 \text{ arcsec}^2$ , as set by the size of the final mosaic).

Transition	$\nu_0$ [GHz]	$z_{\min}$	$z_{\max}$	$\langle z \rangle$	Volume [Mpc <sup>3</sup> ]
(1)	(2)	(3)	(4)	(5)	(6)
band 3: 3mm (84.176–114.928 GHz)					
CO(1-0)	115.271	0.0030	0.3694	0.2801	89
CO(2-1)	230.538	1.0059	1.7387	1.4277	1920
CO(3-2)	345.796	2.0088	3.1080	2.6129	3363
CO(4-3)	461.041	3.0115	4.4771	3.8030	4149
CO(5-4)	576.268	4.0142	5.8460	4.9933	4571
CO(6-5)	691.473	5.0166	7.2146	6.1843	4809
CO(7-6)	806.652	6.0188	8.5829	7.3750	4935
[C I] <sub>1-0</sub>	492.161	3.2823	4.8468	4.1242	4287
[C I] <sub>2-1</sub>	809.342	6.0422	8.6148	7.4031	4936
band 6: 1mm (212.032–272.001 GHz)					
CO(2-1)	230.538	0.0000	0.0873	0.0656	1.4
CO(3-2)	345.796	0.2713	0.6309	0.4858	314
CO(4-3)	461.041	0.6950	1.1744	0.9543	1028
CO(5-4)	576.268	1.1186	1.7178	1.4297	1759
CO(6-5)	691.473	1.5422	2.2612	1.9078	2376
CO(7-6)	806.652	1.9656	2.8044	2.3859	2864
[C I] <sub>1-0</sub>	492.161	0.8094	1.3212	1.0828	1233
[C I] <sub>2-1</sub>	809.342	1.9755	2.8171	2.3973	2875
[C II] <sub>3/2-1/2</sub>	1900.548	5.9873	7.9635	6.9408	4431

the lowest frequencies are accessible in band 3, which therefore is the primary band of choice. An important complement are line scan observations in band 6, as the combination of both bands results in the following: (i) other than one small gap in redshift, there is essentially complete redshift coverage at all redshifts (see Fig. 1 and Tab. 1), (ii) the CO excitation (or limits on it) can be immediately constrained through the detection of multiple rotational transitions, (iii) deep continuum maps in the respective observing bands are available ‘for free’, and (iv), the highest-redshift sources at  $6 < z < 8$  can be probed through [CII] emission.

Band 7 (275–373 GHz) observations may be preferred when one is interested only in the continuum flux densities of the galaxies but such observations would only recover very high J ( $J > 6$ ) transitions at  $z > 2$ , which may not be highly excited in main sequence galaxies (Daddi et al. 2015). Also, the field of view is smaller than in band 6, necessitating more extensive mosaicing.



**Figure 2.** RMS noise as a function of frequency in the 3mm (*left*) and 1mm (*right*) scans. At 3mm, each channel is 19.5 MHz wide (five of the native channels), corresponding to  $70 \text{ km s}^{-1}$  at 84 GHz, and  $51 \text{ km s}^{-1}$  at 115 GHz. The original frequency settings (A–H) are labeled in the bottom panel, together with the frequency blocks (a–k) used in the data reduction. At 1mm, the channels are 31.3 MHz wide (four of the native channels), corresponding to  $44 \text{ km s}^{-1}$  at 212 GHz, and to  $34 \text{ km s}^{-1}$  at 272 GHz. To first order, we reach uniform sensitivity as a function of frequency in both bands. The increase in noise towards high frequencies ( $>113 \text{ GHz}$ ) in band 3 is due to the atmosphere ( $\text{O}_2$ ).

The bandwidth of band 7 ( $\sim 100 \text{ GHz}$ ) requires more than 13 frequency tunings (each with a bandwidth of 8 GHz). For all of these reasons, band 6 is preferred over band 7 to complement the band 3 observations.

We obtained full frequency scans in both ALMA band 3 and band 6. In band 3 this implied 5 frequency setups, labelled A–E in Fig. 2. Both the upper and lower sideband cover 3.75 GHz, with a gap of  $\sim 8 \text{ GHz}$ . For that reason, the central range in band 3 was covered twice, resulting in observations with lower noise in that frequency window. Such an overlap region did not result from the setup of the band 6 frequency scan, as the gap between the upper and lower sideband in band 6 is 12 GHz (see right panel in Fig. 2). panels of Fig. 2 shows the resulting noise as a function of frequency. The noise increase in band 3 towards the higher frequencies is due the atmospheric oxygen line significantly increasing the system temperatures above  $>113 \text{ GHz}$ . As a consequence of the higher frequency, the noise in band 6 observations was significantly higher (and less well-behaved due to skylines etc) than in band 3.

## 2.2. Choice of field

In principle such molecular line scan observations could be obtained at (almost) any position in the sky that is not affected by foreground emission (either our Galaxy, or other nearby galaxies). However, the analy-

sis and interpretation of the detected galaxies is greatly facilitated if a field is chosen for which multi-wavelength observations already exist. It also should be a field that is easily accessible to ALMA. The *Hubble* Ultra Deep Field (UDF, Beckwith et al. 2006) is the cosmological field with the deepest observations in all important wavebands, with 18,000 catalogued galaxies (Coe et al. 2006). The UDF is situated in the  $30'$  Extended *Chandra* Deep Field South (ECDFS Lehmer et al. 2005) / GOODS-South (Giavalisco et al. 2004) / CANDELS (Grogin et al. 2011; Koekemoer et al. 2011) region, so the large-scale structure around this field is well quantified.

The goal of the ALMA frequency scan was to reach a sensitivity such that the predicted ‘knee’ of the CO luminosity function could be reached at  $z \sim 2$  (e.g., Sargent et al. 2014). Given that multiple frequency settings were needed to cover both band 3 and band 6, and given the limited amount of time available in ALMA cycle 2, this implied that only the area corresponding to one pointing in band 3 could be covered by our observations. This  $\sim 1'$  region was covered with a 7-point mosaic in band 6 (see Fig. 3). Our pointing was chosen to lie in the deepest part of the UDF, the so-called UDF12 (Ellis et al. 2013) or eXtremely Deep Field (XDF, Illingworth et al. 2013) (hereafter: XDF), and included the highest number of  $z$ -drop galaxy candidates, i.e. galaxies at  $z > 6$ ,

that could be detectable in [C II] emission. The field also comprises a significant overlap with the deepest MUSE observations of the UDF (Bacon et al., in prep.). The region covered by our observations comprise  $\sim 10\%$  of the total area of the UDF (corresponding to a co-moving survey volume of  $18,000 \text{ Mpc}^3$  out to  $z \sim 8$ ) and harbors roughly  $\sim 1500$  optical/NIR-selected galaxies. In Fig. 3 we also present the star formation rates and stellar masses of all galaxies covered by our observations, based on fitting of the galaxies' spectral energy distribution (Sec. 4).

### 2.3. Choice of Array Configuration

ALMA has been designed to reach high (sub-arcsec) angular resolution. However, to be sensitive to the full molecular gas reservoir in a galaxy, observations in a compact array configuration are essential to ensure that no extended CO emission is missed by the interferometer. Note that this is not related to the 'missing short spacing' problem<sup>2</sup>. For instance, in observations with extended ALMA array configurations the synthesized beam will end up being smaller than the typical size of a high-redshift galaxy. As a result, the amount of emission per beam is only a fraction of the total emission of the galaxy, while the noise does not change. In the case of low S/N detections, this will result in the non-detection of a source, whereas the emission would be detected by a compact configuration. Our observations were taken in the C34-2 and C34-1 configurations, resulting in beam sizes of  $3.6'' \times 2.1''$  (band 3) and  $1.7'' \times 0.9''$  (band 6), i.e. well matched to the expected sizes of the galaxies under consideration.

### 2.4. Observations

The project consists of two spectral scans, one at 3mm (band 3) covering the frequency range 84–115 GHz and one at 1mm (band 6) covering the frequency range 212–272 GHz (see Figs. 1 and 2). The time allocated for both projects amounts to a total of  $\sim 40$  hours including overheads (split approximately 50–50 between band 3 and band 6).

The 3mm observations (ALMA Project ID: 2013.1.00146.S) were carried out between July 1<sup>st</sup>, 2014 and January 6<sup>th</sup>, 2015. The 3mm scan consisted of a single pointing (RA=03:32:37.90 Dec=-27:46:25.0, J2000.0) and 5 frequency settings (see Fig. 2). Each setting had  $4 \times 1.875$  GHz spectral windows (two in the upper side band, and two in the lower side band),

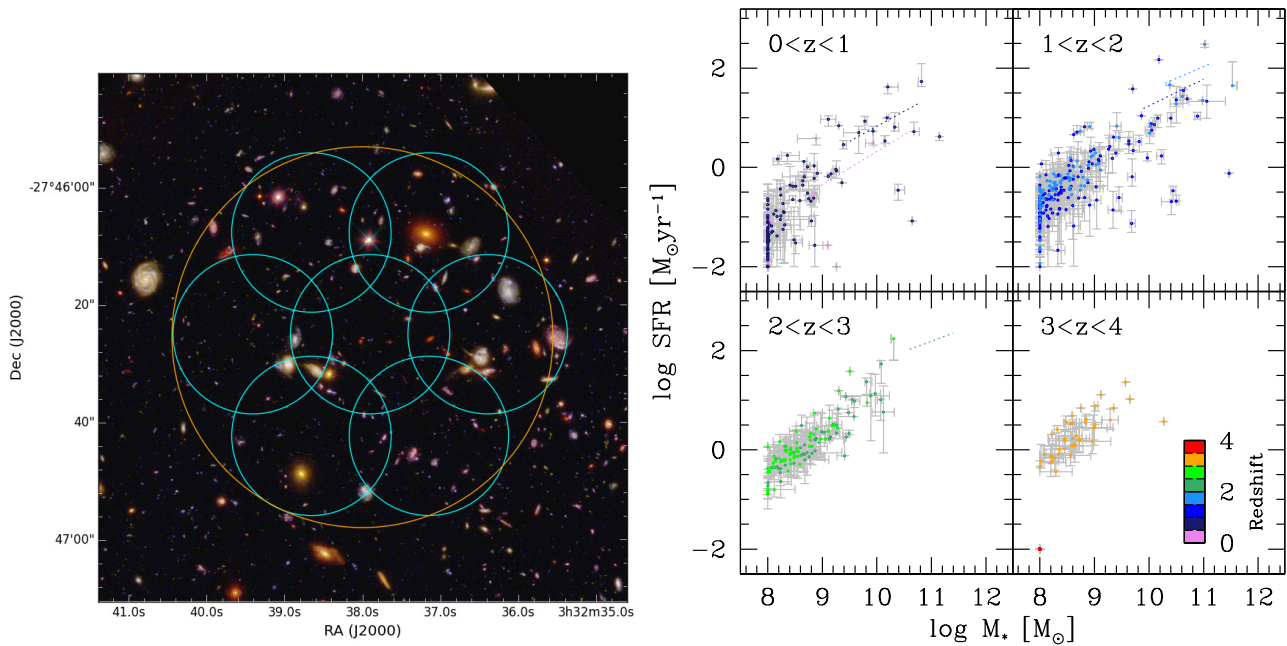
<sup>2</sup> The missing short spacing problem means that the interferometer is 'blind' to spatial scales above a certain size. Given the likely clumpiness of high-redshift galaxies, missing short spacings should typically not be a concern in high-redshift galaxy observations.

and was observed in three execution blocks. The native channel width is 3.9025 MHz, or  $\sim 12 \text{ km s}^{-1}$  at  $\sim 100$  GHz. Observations were carried out in a relatively compact (C34-2) array configuration with 29–41 antennas, with baselines ranging between 12 and 612 m. The quasar J0348–2749 was observed in the majority of the execution blocks as phase and amplitude calibrator, while Uranus and the quasars J0334–4010 and J0334–4008 were used as flux and bandpass calibrators. Data were calibrated and imaged with the *Common Astronomy Software Applications* package (CASA) version 4.2.2 of the ALMA pipeline.

To combine the different setups we adopted the following approach: 1) For each execution block, we split out cubes in frequency ranges as shown in Fig. 2 (a-k). 2) The frequency ranges marked with the letters e-g, i.e., where upper and lower side band observations from different frequency settings overlap, were re-sampled using the CASA task `ms.cvel`. 3) We then combined all the available data for each individual frequency range (a-k) using the CASA task `concat`. 4) Upper and lower side band data come with different weighting scales, although the data quality is comparable. We therefore ran `statwt` in order to homogenize the weighting system in the concatenated data. 5) We combined all the frequency ranges using the task `concat` again.

We imaged the 3mm cube after averaging over two and five native channels (7.8 MHz and 19.5 MHz respectively) using natural weighting. The 19.5 MHz channels correspond to  $70 \text{ km s}^{-1}$  at 84 GHz, and  $51 \text{ km s}^{-1}$  at 115 GHz. We created a band 3 continuum map as well (see discussion in Sec. 3.4). The corresponding primary beams of the ALMA antennas are  $75''$  at 84 GHz and  $55''$  at 115 GHz. The restored synthesized beam size is  $3.5'' \times 2.0''$  (FWHM) with PA= $84^\circ$ . We thus adopted a pixel scale of  $0.5'' \text{ pixel}^{-1}$ , and an image size of  $90'' \times 90''$ . A primary beam correction has been applied for all quantitative analysis. The final data set covers the frequency range 84.176–114.928 GHz, and reaches an rms of  $0.1 - 0.25 \text{ mJy beam}^{-1}$  per 19.5 MHz channel (see Fig. 2). For comparison, the PdBI spectral scan at 3mm in the *Hubble* Deep Field North (Decarli et al. 2014, Walter et al. 2012, 2014) reached a sensitivity of  $\sim 0.3 \text{ mJy beam}^{-1}$  per  $90 \text{ km s}^{-1}$  channel, or  $\sim 0.4 \text{ mJy beam}^{-1}$  at the sampling adopted here. Therefore these ALMA observations are a factor 3–4 deeper at  $\nu < 113$  GHz than the previous 100 hour (on-source) effort with PdBI (Decarli et al. 2014).

The 1mm observations (ALMA Project ID: 2013.1.00718.S) were carried out between December 12<sup>th</sup>, 2014 and April 21<sup>st</sup>, 2015. In order to cover a similar area as the 3mm pointing, a 7-point mosaic was observed, centred on the same coordinates as for the 3mm observations (see Fig. 3). For each pointing



**Figure 3.** *Left:* The FWHM of the primary beam (i.e. areal coverage) of our 3mm (orange) and 1mm (cyan) observations, overlaid on a three-color *HST* F435W / F775W / F105W image of the field from the XDF survey (Illingworth et al. 2013). The circles show the primary beam of each pointing at the central frequencies of the two scans. *Right:* Star formation rates vs. stellar masses for the galaxies in the target field, derived from MAGPHYS fitting (described in Sec. 4). The four panels show galaxies in different redshift ranges.

position, eight frequency settings were needed to cover the entire band (see Fig. 2), resulting in continuous coverage from 212–272 GHz. In this case, there was no overlap between different spectral windows of various frequency tunings (see Fig. 2). Observations were carried out in the most compact available array configuration (C34-1) with 30–34 antennas. Baselines ranged between 12 and 350 k $\lambda$ . The quasar J0348–2749 was adopted as phase and amplitude calibrator, while Uranus and the quasar J0334–4008 acted as flux and bandpass calibrators. The cube was imaged in spectral samplings of 4, 8 and 12 native channels, corresponding to 15.6 MHz, 31.2 MHz, and 46.8 MHz respectively, as well as in a continuum image. The 31.2 MHz sampling corresponds to 44 km s $^{-1}$  at 212 GHz and to 34 km s $^{-1}$  at 272 GHz. We adopted natural weighting, yielding a synthesized beam of  $1.5'' \times 1.0''$  with PA= $-79^\circ$ . We adopted a pixel scale of  $0.3''$  per pixel. The final mosaic covers a region of approximately  $75'' \times 70''$  to the half-sensitivity point.

### 3. LINE SEARCH

The data reduction resulted in two data cubes, one in band 3 and one in band 6, as well as continuum maps, which we discuss later (Sec. 3.4). We here describe our methodology to search for line emitting sources in these cubes.

#### 3.1. The blind line search

For our blind search of line candidates, we developed an IRAF-based routine, *findclumps*, which operates directly on the imaged data cubes. The script performs floating averages of a number of channels, computes the rms of the averaged maps, and searches for peaks exceeding a certain S/N threshold using the IRAF task *daofind*. The position, frequency, and S/N of the recovered candidates is saved. As input, we used the 7.8 MHz and 31.2 MHz sampling for the 3mm and 1mm cubes respectively. Since the significance of a line detection is maximized when averaging over a frequency range comparable with the actual width of the line, we ran our search over 3, 5, 7, and 9-channel windows, i.e., kernel line widths of  $\sim 50$ – $300$  km s $^{-1}$  (an inspection using larger line-widths did not result in additional detections – this is also supported by our completeness test, see below).

The list of line candidates identified by this procedure is then trimmed in order to keep only candidates that lie within  $\sqrt{2} \times$  the primary beam radius at 3mm ( $= 53''$  at 84 GHz,  $39''$  at 115 GHz), equivalent to a response of  $\sim 30\%$  and within a fixed radius of  $30.9''$  at 1mm (given that the latter is a mosaic).

The floating-average approach and the use of different windows of spectral sampling allow us to avoid missing candidates because of a priori choices in terms of spectral bins. However, our candidate lists are subject to multiplicity both spatially and spectrally. More-

over, the 1mm search is bound to pick up bright continuum sources as potential line candidates. We therefore masked a posteriori the line candidates associated with the two brightest 1mm continuum sources (see Sec. 3.4 and *Paper II*). We consider as duplicates line candidates that are offset by less than one synthesized beam ( $\sim 2.5''$  at 3mm,  $\sim 1.5''$  at 1mm) and that appear in consecutive channels in the floating average.

When assessing the reliability of our line candidates, we need to keep two separate issues in mind (‘fidelity’ and ‘completeness’, which we discuss in Secs. 3.1.1 and 3.1.2).

### 3.1.1. Fidelity

First, is a given line detection significant? This question is harder to address in practice than one would naively think: the S/N of a single detection will be a function of the width of the line, and the noise in the cubes is not Gaussian. The best way to address this question is to perform two independent searches: (a) for positive emission; these candidates would correspond to both real astrophysical sources and noise peaks, (b) for negative emission; these candidates would only correspond to non-astrophysical sources<sup>3</sup>. These latter sources can be used to define a term that we refer to as *fidelity*, i.e. we can statistically subtract the unphysical ‘negative’ lines from the physical ‘positive’ ones.

We thus assess the degree of fidelity in our line search by running the same search over the positive and negative peaks. The basic assumption is that, given the interferometric nature of our data set, and that we do not expect to detect absorption features against very high-S/N continuum emission, all the ‘negative’ line candidates will be noise peaks, while the ‘positive’ line candidates will be a mixture of noise peaks and genuine lines. The search for negative peaks is performed in the exact same way as the one for positive emission. By comparing the results of these two searches, we can quantify the fidelity of our search at a given line candidate significance as follows:

$$\text{fidelity}(S/N) = 1 - \frac{N_{\text{neg}}(S/N)}{N_{\text{pos}}(S/N)} \quad (1)$$

where  $N_{\text{pos}}(S/N)$  and  $N_{\text{neg}}(S/N)$  are the number of positive and negative line candidates with a given  $S/N$ , respectively. This definition is such that, if the number of negative candidates at a given  $S/N$  is comparable

to the number of positive candidates, then the fidelity is null; if it is negligible, then the fidelity is close to 100%. For the analysis of our blind search, we request a fidelity level of 60% or higher. This threshold was chosen so that at the lowest accepted significance, more than half of the ‘positive’ line candidates are real. We determine the signal-to-noise ( $S/N$ ) ratio computed by `findclumps` as follows: For each floating-averaged channel, we compute the map rms (which will constitute the ‘noise’ term) and we take the peak pixel value at the position of a line candidate as ‘signal’. We emphasize that, since the averaging window is not optimized to match the actual width of a line candidate (also this approach assumes spatially-unresolved line emission), this definition of  $S/N$  is by construction conservative. The  $S/N$  values of each line candidate are reported in Tab. 2. In Fig. 4 we show how the fidelity of our line search changes as a function of the line  $S/N$ . It is convenient to have an analytical description of the fidelity dependence on  $S/N$ . While not physically motivated, the following error function provides a good description of the observed trend, with the following parameterization:

$$\text{fidelity}(S/N) = \frac{1}{2} \operatorname{erf} \left( \frac{S/N - C}{\sigma} \right) + 0.5 \quad (2)$$

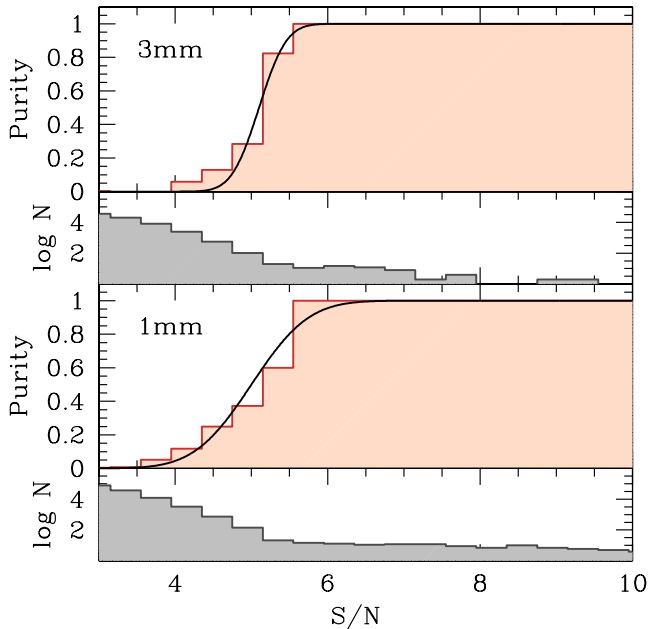
where  $C_{3\text{mm}}=5.1$ ,  $C_{1\text{mm}}=5.0$ ,  $\sigma_{3\text{mm}}=0.4$ ,  $\sigma_{1\text{mm}}=0.8$ . This implies that we reach 60, 80, and 95% fidelity levels at  $S/N=5.17$ , 5.34, and 5.57 at 3mm, and at  $S/N=5.15$ , 5.50, and 5.97 at 1mm. We will use this equation to assess the fidelity for our individual line detections.

### 3.1.2. Completeness

The second question concerns our ability to extract faint sources from our data cubes (*completeness*). We address this by inserting artificial line sources of various strengths and widths in our data cubes, then calculating our ability to recover them in our line search. This is a standard way of deriving the completeness of sources in the low S/N regime.

We assess the level of *completeness* in our blind line search by adding 2500 artificial line sources to the data cube, re-running our line searching algorithm, and comparing the number of recovered sources with the input catalog. The line candidates are assumed to have a gaussian profile along the spectral axis, and the shape of the synthetic beam in the maps. The line spatial positions, peak frequencies, peak flux densities and widths are randomly generated with uniform distributions as follows: RA, Dec and the line peak frequency are required to be homogeneously distributed within the cubes. The line peak flux density range between 0.22–1.00 mJy (at 3mm) and between 0.5–2.0 mJy (at 1mm), where the fainter side is set to roughly match the 1- $\sigma$  typical limit of each channel. The line widths span the range 50–

<sup>3</sup> An interesting hypothesis is that at least some of the negative sources are in fact real absorption systems due to absorption against the CMB. However, our checks revealed that none of the significant negative sources are either associated with a galaxy visible in the UDF, nor with a strong continuum emission. We conclude that the negative sources revealed by our search are physically implausible.



**Figure 4.** The *fidelity* in our line search, plotted as a red histogram as a function of the line  $S/N$  of the individually detected candidates. The fidelity is defined as in eq. 1. The number of candidates as a function of  $S/N$  is also shown. We model the fidelity dependence on  $S/N$  as an error function (solid black line). The search reaches 60% fidelity at  $S/N \sim 5.2$  both at 1mm and 3mm, although the latter shows a sharper increase of fidelity with  $S/N$ . We choose a fidelity level of  $>60\%$  for the sources that enter our analysis, implying that, at the lowest significance, out of a sample of 10 candidates, 6 are likely real, and 4 sources at similar  $S/N$  were also detected with negative signal.

$500 \text{ km s}^{-1}$ . In Fig. 5 we show how the completeness of our line search is a function of the input width and peak flux density of the lines. At 3mm, the completeness is  $> 50\%$  for peak flux densities  $F_{\nu}^{\text{line}} > 0.45 \text{ mJy}$ , and for line widths  $\Delta v > 100 \text{ km s}^{-1}$ . We also observe a minor dependence of the completeness on the frequency due to the decreasing sensitivity towards the high frequency end of the scan (see Fig. 2). The line search in the 1mm mosaic shows a completeness  $> 50\%$  for peak flux densities  $> 0.8 \text{ mJy}$  and widths  $> 100 \text{ km s}^{-1}$ . These completeness corrections will be used extensively in *Paper III*.

### 3.2. Line candidates

#### 3.2.1. Properties

For our subsequent analysis we consider only those sources that have a *fidelity* of greater than 60% and where the extracted line is detected at  $>2\sigma$  in consecutive channels (width:  $\sim 25 \text{ km s}^{-1}$  at 3 mm,  $\sim 40 \text{ km s}^{-1}$  at 1 mm). Our blind search resulted in 10 line candidates from the 3 mm search, and 11 line candidates from the 1 mm search (see Tab. 2 and the figures in the Appendix). Given our requirement on the *fidelity* in our

search, we expect that  $<4$  out of these line candidates are spurious in each band. We show the candidates, sorted by  $S/N$  of the line emission, in Figs. A1 (band 3) and A2 (band 6). In each case, the left panel shows an *HST* color composite, and the middle panel shows the *HST* image in greyscale, and the CO line candidates in contours. The right panel shows the spectrum extracted at the position of the line candidate. The basic parameters of the candidate lines (RA, Dec, frequency, integrated flux, line width and  $S/N$ ) are summarized in Tab. 2.

#### 3.2.2. Optical/NIR counterparts

We have searched for optical/NIR counterparts by matching the positions of the sources in the multi-wavelength catalogs (Sec. 2.2) with our line candidates. Whether a specific CO line candidate has a counterpart or not is summarized in column 8 of Tab. 2 (see also Figs. A1 and A2). The lines that show an optical/NIR counterpart with matching redshift are discussed in detail in *Paper IV*.

#### 3.2.3. Redshift determination

Given the (almost) equi-distant spacing of the rotational transitions of CO, it is not straightforward to assign a unique redshift to each candidate in a number of cases.

*Multiple CO lines?*— For certain redshifts, more than one CO transition is covered by our band 3 and band 6 scans. We use this information to constrain the redshift of some of the candidate. Likewise, in other cases a certain redshift solution can be ruled out if other detectable lines are not detected. This information is given in the ‘comments’ column of Tab. 2.

*Optical/NIR spectroscopic redshifts:*— In some cases, spectroscopic redshifts are available for the optical/NIR counterparts, either through longslit spectroscopy (Le Fèvre et al. 2005; Kurk et al. 2013; Skelton et al. 2014; Morris et al. 2015), or *HST* grism observations (Morris et al. 2015; Momcheva et al. 2016). We also record this information in the ‘comments’ column of Tab. 2.

*Lack of optical/NIR counterparts:*— In a number of cases, no optical/NIR counterpart of the line candidate is visible in the *HST* image. This can be due to the fact that the source is spurious. But if the candidate was real, and assuming that there is no significant reddening by dust, then the exquisite depth of the available optical/NIR observations (in particular the *HST*/WFC3 IR images and the Spitzer/IRAC images) can place constraints on the stellar mass of galaxies as a function of redshift. Our MAGPHYS fits (see Sec. 4) of the available photometry suggest that a galaxy securely detected



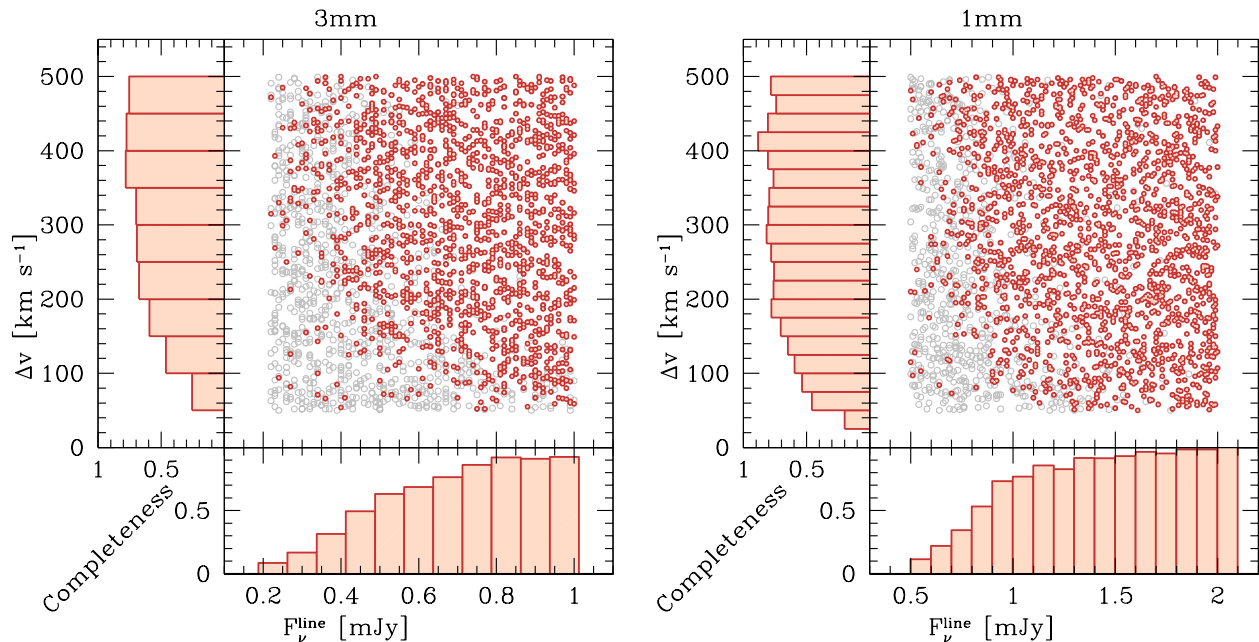
**Table 2.** Catalogue of the line candidates identified in our analysis. (1) Line ID. (2-3) Right ascension and declination (J2000). (4) Central frequency and uncertainty, based on Gaussian fit. (5) Velocity integrated flux and uncertainty. (6) Line Full Width at Half Maximum, as derived from a Gaussian fit. (7) signal-to-noise as measured by the line searching algorithm. (8) Spatially coincident optical/NIR counterpart? (9) Comments on line identification.

ID	RA	Dec	Frequency	Flux	FWHM	$S/N$	Opt/NIR	Comments
ASPECS...	(J2000.0)	(J2000.0)	[GHz]	[Jy km s <sup>-1</sup> ]	[km s <sup>-1</sup> ]		c.part?	
(1)	(2)	(3)	(4)	(5)	(6)	(7)	(8)	(9)
<b>3mm (band 3)</b>								
3mm.1	03:32:38.52	-27:46:34.5	97.567 <sup>+0.003</sup> <sub>-0.003</sub>	0.72 ± 0.03	500 <sup>+30</sup> <sub>-30</sub>	19.91	Y	J=3; J=7,8 also detected
3mm.2	03:32:39.81	-27:46:11.6	90.443 <sup>+0.003</sup> <sub>-0.003</sub>	0.44 ± 0.08	540 <sup>+30</sup> <sub>-30</sub>	12.80	Y	J=2; J=5 tentatively detected. Confirmed by opt. spectroscopy
3mm.3	03:32:35.55	-27:46:25.7	96.772 <sup>+0.003</sup> <sub>-0.003</sub>	0.13 ± 0.01	57 <sup>+30</sup> <sub>-30</sub>	9.48	Y	J=2 is ruled out by optical spectroscopy
3mm.4	03:32:40.64	-27:46:02.5	91.453 <sup>+0.003</sup> <sub>-0.003</sub>	0.23 ± 0.03	73 <sup>+30</sup> <sub>-30</sub>	5.86	N	lack of counterpart suggests J>2
3mm.5	03:32:35.48	-27:46:26.5	110.431 <sup>+0.003</sup> <sub>-0.003</sub>	0.18 ± 0.02	82 <sup>+25</sup> <sub>-25</sub>	5.42	Y	J=2 confirmed by optical spectroscopy
3mm.6	03:32:35.64	-27:45:57.6	99.265 <sup>+0.003</sup> <sub>-0.003</sub>	0.23 ± 0.02	160 <sup>+30</sup> <sub>-30</sub>	5.40	N	lack of counterpart suggests J>2
3mm.7	03:32:39.26	-27:45:58.8	100.699 <sup>+0.003</sup> <sub>-0.003</sub>	0.08 ± 0.01	60 <sup>+25</sup> <sub>-30</sub>	5.40	N	lack of counterpart suggests J>2
3mm.8	03:32:40.68	-27:46:12.1	101.130 <sup>+0.003</sup> <sub>-0.003</sub>	0.19 ± 0.01	100 <sup>+25</sup> <sub>-30</sub>	5.30	N	no match with nearby galaxy; J>2
3mm.9	03:32:36.01	-27:46:47.9	98.082 <sup>+0.003</sup> <sub>-0.003</sub>	0.09 ± 0.01	64 <sup>+30</sup> <sub>-30</sub>	5.28	N	lack of counterpart suggests J>2
3mm.10	03:32:35.66	-27:45:56.8	102.587 <sup>+0.003</sup> <sub>-0.003</sub>	0.24 ± 0.02	120 <sup>+25</sup> <sub>-25</sub>	5.18	Y	J=3 ( $z=2.37$ ) would match $z_{\text{grism}} = 2.37$
<b>1mm (band 6)</b>								
1mm.1	03:32:38.54	-27:46:34.5	227.617 <sup>+0.003</sup> <sub>-0.003</sub>	0.79 ± 0.04	463 <sup>+80</sup> <sub>-10</sub>	18.28	Y	J=7
1mm.2	03:32:38.54	-27:46:34.5	260.027 <sup>+0.003</sup> <sub>-0.059</sub>	1.10 ± 0.05	478 <sup>+11</sup> <sub>-70</sub>	16.46	Y	J=8
1mm.3	03:32:38.54	-27:46:31.3	225.181 <sup>+0.003</sup> <sub>-0.003</sub>	0.22 ± 0.02	101 <sup>+18</sup> <sub>-18</sub>	5.87	Y	J=3 would imply $z=0.54$ , and $z_{\text{grism}} = 0.54$
1mm.4	03:32:37.36	-27:46:10.0	258.333 <sup>+0.016</sup> <sub>-0.003</sub>	0.27 ± 0.02	150 <sup>+20</sup> <sub>-20</sub>	5.62	N	if [C II], tentative CO(6-5) detection is possible. Possibly lensed by foreground Elliptical galaxy
1mm.5	03:32:38.59	-27:46:55.0	265.320 <sup>+0.003</sup> <sub>-0.031</sub>	0.72 ± 0.03	211 <sup>+37</sup> <sub>-10</sub>	5.47	N	lack of other lines suggests J=4
1mm.6	03:32:36.58	-27:46:50.1	222.553 <sup>+0.003</sup> <sub>-0.003</sub>	0.56 ± 0.02	302 <sup>+12</sup> <sub>-40</sub>	5.45	Y	J=4 yields $z=1.07$ , J=5 yields $z=1.59$ , J=6 yields $z=2.11$ , tentative second line
1mm.7	03:32:37.91	-27:46:57.0	257.042 <sup>+0.003</sup> <sub>-0.003</sub>	1.78 ± 0.03	179 <sup>+11</sup> <sub>-11</sub>	5.43	N	lack of other lines suggests J=4
1mm.8	03:32:37.68	-27:46:52.6	222.224 <sup>+0.022</sup> <sub>-0.003</sub>	0.39 ± 0.02	210 <sup>+30</sup> <sub>-12</sub>	5.33	N	lack of counterpart excludes J=2,3; lack of other lines exclude CO. [C II]?
1mm.9	03:32:36.14	-27:46:37.0	249.085 <sup>+0.016</sup> <sub>-0.003</sub>	0.34 ± 0.02	150 <sup>+20</sup> <sub>-20</sub>	5.19	N	J=4; lack of counterparts excludes J<4. Lack of other lines excludes J>4
1mm.10	03:32:37.08	-27:46:19.9	237.133 <sup>+0.003</sup> <sub>-0.003</sub>	0.49 ± 0.04	281 <sup>+48</sup> <sub>-12</sub>	5.18	N	J=4 or 6 due to lack of counterparts and other lines. J=4 favoured because of excitation
1mm.11	03:32:37.71	-27:46:41.0	223.067 <sup>+0.003</sup> <sub>-0.025</sub>	0.27 ± 0.02	169 <sup>+35</sup> <sub>-12</sub>	5.16	N	lack of other lines suggests J=3

in H-band ( $1.6\mu\text{m}$ ) at  $> 50$  nJy (corresponding to a secure,  $>10\text{-}\sigma$  detection in a few bands) has a stellar mass of  $>4\times 10^6 M_{\odot}$ ,  $>2\times 10^7 M_{\odot}$ , and  $>10^8 M_{\odot}$  at  $z=0.5$ , 1.0, and 2.0, respectively. Because of the combination of low molecular gas content, and likely elevated  $\alpha_{\text{CO}}$  values (Bolatto et al. 2013), we do not expect to detect CO in galaxies with  $M_{*} \ll 10^9 M_{\odot}$ . Therefore can use the lack of an optical counterpart to set constraints on the redshift of the candidate. In particular, we assume that line candidates selected in band 3 and lacking an optical/NIR counterpart are at  $z > 2$  (i.e., the

line is identified as CO(3-2) or a higher-J transition). In the case of band 6 candidates, we give priority to the constraints from the multiple line (non-)detection. The ‘lack of counterpart’ argument is chosen only to rule out the lowest- $z$  scenarios ( $J<4$ , corresponding to  $z < 0.695$ ). This additional constraint on the line candidates is also given in the ‘comments’ column of Tab. 2.

The total CO flux of all line candidates is  $2.55 \text{ Jy km s}^{-1}$ , whereas the total flux of the candidates that have no optical/NIR counterpart is  $0.83 \text{ Jy km s}^{-1}$  (from Tab. 2), i.e.  $\sim 33\%$  of the total. As some of the line



**Figure 5.** Completeness assessment of our line search. In each diagram, each circle represents an artificially injected line candidate. Filled symbols highlight the candidates that we recover in our analysis. The histograms show the marginalization along the y- and x-axis respectively, showing the level of completeness (i.e., the fraction of input line candidates that our script successfully identifies) as a function of the line width ( $\Delta v$ ) and peak flux density ( $F_{\nu}^{\text{line}}$ ), respectively. The 3mm case is shown on the left, the 1mm one is on the right.

candidates that do not show an optical/IR counterpart are likely spurious, and considering that the brightest CO detections with optical/NIR counterparts dominate the total emission, the flux fraction of real objects without optical/NIR counterpart is likely lower.

### 3.3. Other CO- and [C II]-detected galaxies

This paper describes our blind search results. An alternative approach to finding line emission in the galaxies covered by our observations is to search the cubes at the position of optical galaxies that have accurate spectroscopic redshifts. Such additional information (position and redshift) could in principle help to identify plausible CO or [C II] emission lines at lower significance than those revealed by the automatic search. We have performed such a search, which has resulted in the detection of 3 additional galaxies that are tentatively detected in CO emission. These detections are presented and discussed in *Paper IV*. We note that the inclusion of these 3 galaxies would not change the statistical analysis based on the much larger sample presented here. Similarly, in *Paper V* we investigate the presence of [C II] emission in galaxies for which a photometric redshift from SED fitting or the detection of a clear drop-out in the  $z$  band suggests redshifts  $z > 6$ .

### 3.4. Continuum emission

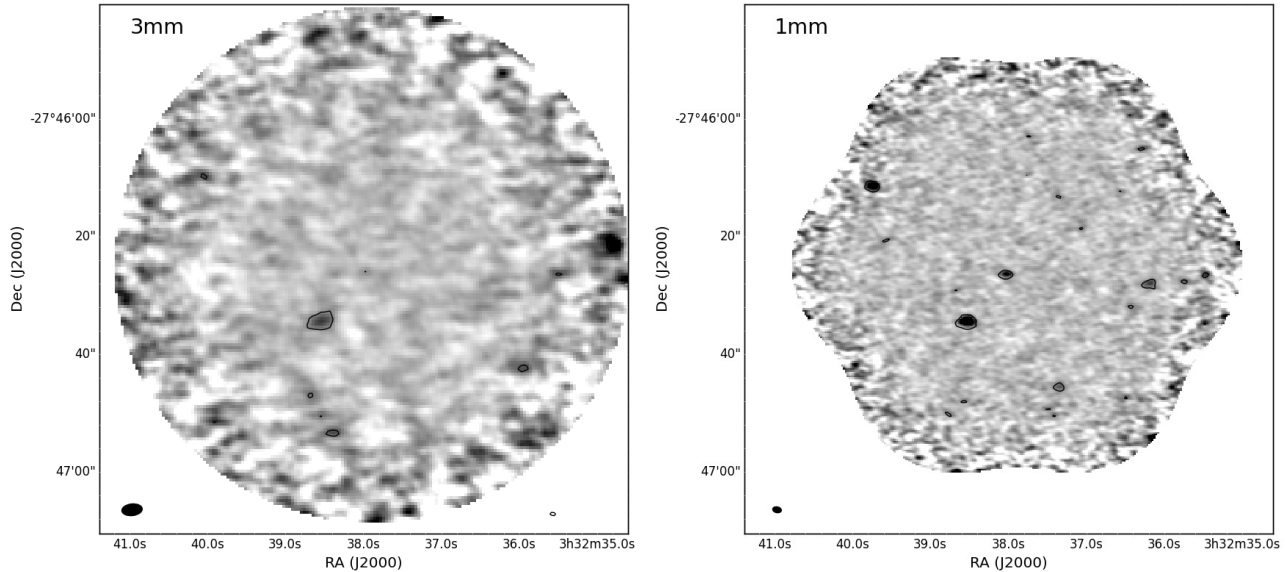
The frequency scans can be used to obtain very high-sensitivity maps of the continuum, by collapsing the

two data cubes along the frequency axis, after removing the few channels that contain significant line emission. The resulting continuum maps with noise levels at their center of  $3.8 \mu\text{Jy beam}^{-1}$  (band 3) and  $12.7 \mu\text{Jy beam}^{-1}$  (band 6) are shown in Fig. 6 and will be discussed in detail in *Paper II*.

## 4. COMPARISON WITH EXPECTATIONS

We present a detailed comparison of the evolution of the CO luminosity functions, and the resulting cosmic density of molecular hydrogen in *Paper III*. As a sanity check, we here briefly compare the number of CO-detected galaxies with previous expectations based on a multi-wavelength analysis of the galaxies in the UDF.

For each galaxy in the UDF, da Cunha et al. (2013) estimated stellar masses, SFRs, IR luminosities, and expected CO and [C II] fluxes and luminosities by fitting the optical/NIR photometry provided by Coe et al. (2006), using the MAGPHYS spectral energy fitting code (da Cunha et al. 2008). We show the resulting star formation rates, and stellar masses, in four redshift bins in the right hand panel of Fig. 3. Note that typical selections of main sequence galaxies for CO follow-up usually target stellar masses  $M_{\text{star}} > 10^{10} M_{\odot}$  and star formation rates  $\text{SFR} > 50 M_{\odot} \text{yr}^{-1}$  (e.g. Daddi et al. 2008, Tacconi et al. 2008, Genzel et al. 2008, Tacconi et al. 2012, Daddi et al. 2015, Genzel et al. 2015). I.e. this selection would target galaxies in the top right part of



**Figure 6.** Continuum images at 3mm (*left*) and 1mm (*right*). In both panels, we plot a contour at the  $3\sigma$  level, where  $1\text{-}\sigma$  is  $3.8\ \mu\text{Jy beam}^{-1}$  in the 3mm observations and  $12.7\ \mu\text{Jy beam}^{-1}$  in the 1mm observations. Both images have been primary-beam corrected. Note that at 3mm, only one source is clearly detected at  $S/N > 3$ . The 1mm continuum map is extensively discussed in *Paper II*.

each diagram, as the UDF contains many galaxies that are much less massive / star forming.

In Fig. 7 we show the expected numbers of line detections in the 3mm and 1mm bands, respectively. In this plot, the expected number of lines from [da Cunha et al. \(2013\)](#), originally computed for the entire  $3' \times 3'$  UDF, has been scaled to the areal coverage of our survey. In [da Cunha et al. \(2013\)](#), two extreme CO excitation cases were considered in order to transform predicated CO(1–0) luminosities into higher-J line luminosities: the low-excitation case of the global Milky Way disk, and the high-excitation case of the nucleus of the local starburst galaxy M82 ([Weiß et al. 2007](#)). For each line flux plotted on the abscissa, this range of excitation conditions is indicated by the grey region on the ordinate.

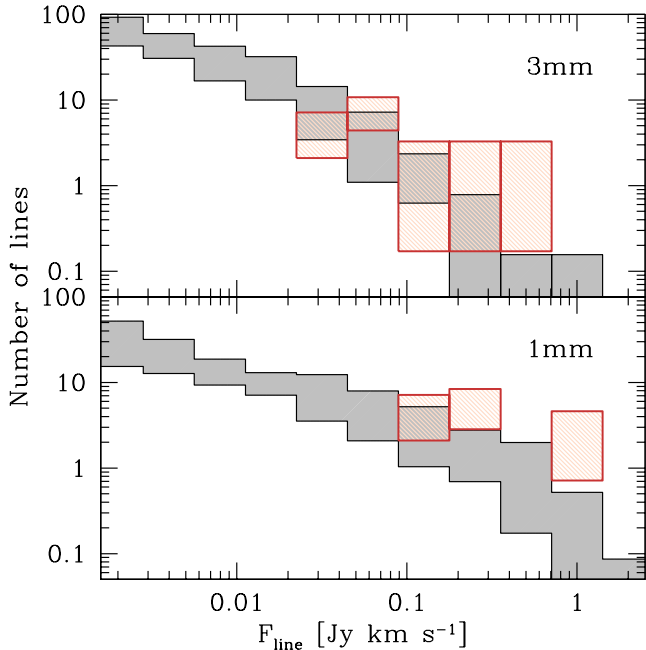
In this figure, we compare to our observations, which are plotted as red-shaded regions. For each flux bin on the abscissa, the number counts with the Poissonian error bars are shown on the ordinate. For this back-of-the-envelope calculation, we do not correct our measurements for completeness or fidelity (this is done in detail in *Paper III*). A number of things need to be kept in mind in this comparison: the total number of detected sources is low, which results in large uncertainties in the measurements on the ordinate. At 1mm, the data in the highest flux bin (around  $1\ \text{mJy km s}^{-1}$ ) is significantly higher than the predictions. Note however that measurement includes the two high-J CO detections of ASPECS 1mm.1/2, a galaxy that was not included in the UDF catalog on which the predictions by [da Cunha et al. \(2013\)](#) were based. Larger areas are required to see if

there is indeed an excess of high-J CO emission present. Overall, we conclude that within the large uncertainties, there is reasonable agreement between the observations and previous expectations. This is discussed in detail in *Paper III*.

## 5. SUMMARY

We present the rationale for and the observational description of ASPECS, our complete band 3 and band 6 spectral line scan with ALMA of the *Hubble* Ultra-Deep Field (UDF). This field was chosen because it has the deepest multi-wavelength data available, it will remain a key cosmological deep field in the future (in particular in the era of JWST) and is easily observable by ALMA. We discuss our survey design of the full frequency scans in band 3 (84–115 GHz) and band 6 (212–272 GHz) and report the relevant parameters of our final dataset. Critically, ALMA allows us to reach approximately uniform depth (line sensitivity:  $\sim L'_{\text{CO}} \sim 2 \times 10^9\ \text{K km s}^{-1}\ \text{pc}^2$ ) across a broad range of redshifts.

The spectral line scans cover the different rotational transitions of the CO molecule at different redshifts, leading to essentially full redshift coverage. We present a customized algorithm to identify line candidates in our data. This algorithm takes varying linewidths of the possible emission lines into account. We assess the fidelity of our line search by comparing the number of positive candidates to the respective number of negative candidates, the latter being unphysical. We also calculate the *completeness* of our search, by quantifying our ability to recover artificial sources in our data.



**Figure 7.** Comparison between the MAGPHYS-based predictions of line fluxes from [da Cunha et al. \(2013\)](#), in grey, and the flux distribution of the line candidates actually observed in our survey (red boxes). The numbers from [da Cunha et al. \(2013\)](#) are computed over the whole UDF, and scaled down to match the same area coverage of our survey. We consider here only the transitions that we cover in our scan (see Tab. 1). The lower and upper sides of the shaded grey area refer the cases of Milky Way- and M82-like CO excitation. In the case of our ALMA constraints, the vertical size of the boxes show the Poissonian uncertainties in the number of lines detected in a certain flux range. Our ALMA constraints are not corrected for the fidelity and completeness of our line search. The number of detected lines is in general agreement with the expectations, in particular if one keeps in mind that ASPECS 1mm.1/2, whose high-J CO emission dominates the highest flux bin at 1mm, was not included in the [da Cunha et al. \(2013\)](#) study.

We present CO spectra and *HST* postage stamps of the most significant detections. Based on whether multiple CO lines are detected, and whether optical spectroscopic (either slit or grism) redshifts as well as optical/NIR counterparts exist, we give constraints on the most likely line identification of our candidates.

Out of the 10 line candidates (3mm band) reported in our search (Tab. 2), we expect  $<4$  candidates to be spurious, given our statistical analysis. There are a number of line candidates at positions where no optical/NIR counterpart is present. The total CO flux of these candidates is less than 33% of the total flux of all candidates, i.e. candidate sources without counterparts only contribute a small fraction of the total measured flux in the targeted field. We also present continuum maps of both the band 3 and band 6 observations. The observed flux distribution of the line candidates is in general agreement with the empirical expectations by [da Cunha et](#)

[al. \(2013\)](#) based on SED modeling of the optical/NIR emission of galaxies in the UDF.

The data presented in this paper (*Paper I*) form the basis of a number of dedicated studies presented in subsequent papers:

- In *Paper II* ([Aravena et al. 2016a](#)) we present 1.2 mm continuum number counts, dust properties of individual galaxies, and demonstrate that our observations recover the cosmic infrared background at the wavelengths considered.
- In *Paper III* ([Decarli et al. 2016a](#)) we discuss the implications for CO luminosity functions and the resulting constraints on the gas density history of the Universe. Based on our data we show that there is a sharp decrease (by a factor of  $\sim 5$ ) in the cosmic molecular gas density from redshift  $\sim 3$  to 0.
- In *Paper IV* ([Decarli et al. 2016b](#)) we examine the properties of those galaxies in the UDF that show bright CO emission, and discuss these also in the context of the bright optical galaxies that are not detected in CO.
- In *Paper V* ([Aravena et al. 2016b](#)) we search for [C II] emitters in previously reported Lyman-break galaxies at  $6 < z < 8$ .
- In *Paper VI* ([Bouwens et al. 2016](#)) we investigate where high-redshift galaxies from ASPECS lie in relation to known IRX- $\beta$  and IRX-stellar mass relationships, concluding that less dust continuum emission is detected in  $z > 2.5$  than expected (unless high dust temperatures,  $T \sim 50$  K, are assumed).
- Finally, in *Paper VII* ([Carilli et al. 2016](#)) we discuss implications on CO intensity mapping experiments, and contributions towards the emission from the cosmic microwave background.

The data presented here demonstrate the unique power of ALMA spectral scans in well-studied cosmological deep fields. The current size of the survey is admittedly small, limited by the amount of time available in ALMA ‘early science’. More substantial spectral scan surveys with ALMA of the full UDF (and beyond) will become feasible once ALMA is fully operational.

#### ACKNOWLEDGMENTS

We thank the referee for a constructive report that helped improve the presentation of the data. FW, IRS, and RJI acknowledge support through ERC grants COSMIC-DAWN, DUSTYGAL, and COSMICISM, respectively. MA acknowledges partial support from FONDECYT through grant 1140099. DR acknowledges support from the National Science Foundation under grant number AST-#1614213 to Cornell University. FEB and LI acknowledge Conicyt grants Basal-CATA PFB-06/2007 and Anilo ACT1417. FEB also acknowledges support from FONDECYT Regular 1141218 (FEB), and the Ministry of Economy, Development, and

Tourism’s Millennium Science Initiative through grant IC120009, awarded to The Millennium Institute of Astrophysics, MAS. IRS also acknowledges support from STFC (ST/L00075X/1) and a Royal Society / Wolfson Merit award. Support for RD and BM was provided by the DFG priority program 1573 ‘The physics of the interstellar medium’. AK and FB acknowledge support by the Collaborative Research Council 956, sub-project A1, funded by the Deutsche Forschungsgemeinschaft (DFG). PI acknowledges Conict grants Basal-CATA PFB-06/2007 and Anilo ACT1417. RJA was supported

by FONDECYT grant number 1151408. This paper makes use of the following ALMA data: 2013.1.00146.S and 2013.1.00718.S. ALMA is a partnership of ESO (representing its member states), NSF (USA) and NINS (Japan), together with NRC (Canada), NSC and ASIAA (Taiwan), and KASI (Republic of Korea), in cooperation with the Republic of Chile. The Joint ALMA Observatory is operated by ESO, AUI/NRAO and NAOJ. The 3mm-part of ALMA project had been supported by the German ARC.

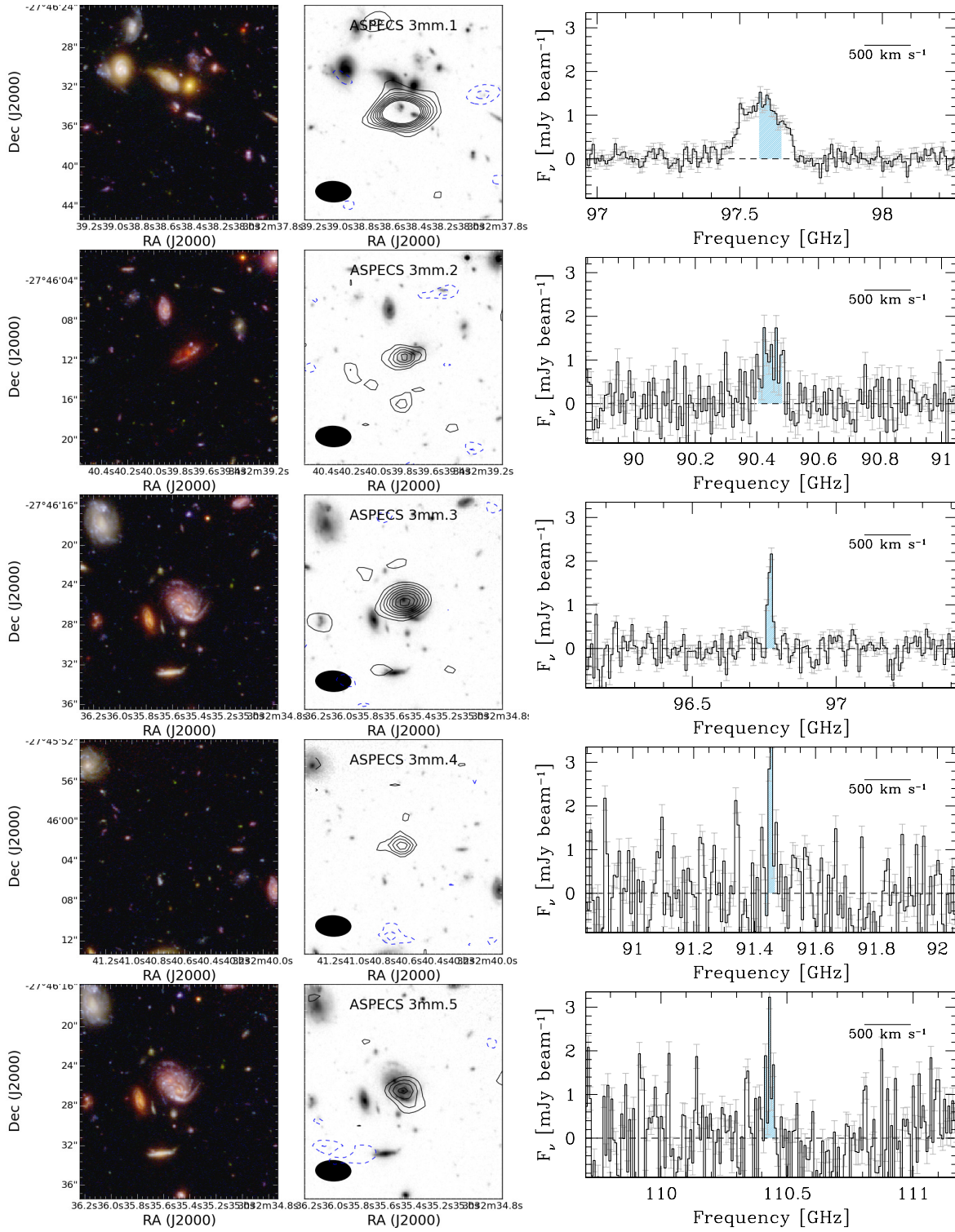
## APPENDIX

### A. LINE CANDIDATES FROM THE BLIND SEARCH

In this appendix, we show postage stamps and extracted spectra for all the line candidates identified with the blind line search.

## REFERENCES

- Aravena, M., Decarli, R., Walter, F., et al., 2016a, *ApJ*, *subm.*  
 Aravena, M., Decarli, R., Walter, F., et al., 2016b, *ApJ*, *subm.*  
 Beckwith S.V., Stiavelli M., Koekemoer A.M., Caldwell J.A.R., Ferguson H.C., Hook R., Lucas R.A., Bergeron L.E., et al., 2006, *AJ*, 132, 1729  
 Bell E.F., McIntosh D.H., Katz N., Weinberg M.D. 2003, *ApJ*, 585, L117  
 Bolatto A.D., Wolfire M., Leroy A.K. 2013, *ARA&A*, 51, 207  
 Bouwens, R., Aravena, M., Decarli, R., et al., 2016, *ApJ*, *subm.*  
 Carilli C.L. & Walter F., 2013, *ARA&A*, 51, 105  
 Carilli, C., Chluba, J., Decarli, R., et al., 2016, *ApJ*, *subm.*  
 Coe D., Benítez N., Sánchez S.F., Jee M., Bouwens R., Ford H., 2006, *AJ*, 132, 926  
 da Cunha E., Charlot S., Elbaz D., 2008, *MNRAS*, 388, 1595  
 da Cunha E., Walter F., Decarli R., Bertoldi F., Carilli C., Daddi E., Elbaz D., Ivison R., et al., 2013a, *ApJ*, 765, 9  
 da Cunha E., Groves B., Walter F., Decarli R., Weiß A., Bertoldi F., Carilli C., Daddi E., Elbaz D., Ivison R., et al., 2013b, *ApJ*, 766, 13  
 da Cunha E., Walter F., Smail I.R., Swinbank A.M., Simpson J.M., Decarli R., Hodge J.A., Weiss A., et al. 2015, *ApJ*, 806, 110  
 Daddi E., Dannerbauer H., Liu D., Aravena M., Bournaud F., Walter F., Riechers D., Magdis G., et al. 2015, *A&A*, 577, 46  
 Decarli, R., Walter, F., Aravena, M., et al., 2016a, *ApJ*, *subm.*  
 Decarli, R., Walter, F., Aravena, M., et al., 2016b, *ApJ*, *subm.*  
 Ellis, R. S., McLure, R. J., Dunlop, J. S., et al. 2013, *ApJL*, 763, L7  
 Giavalisco M., Ferguson H.C., Koekemoer A.M., Dickinson M., Alexander D.M., Bauer F.E., Bergeron J., Biagetti C., Brandt W.N., Casertano S., et al., 2004, *ApJ*, 600, L93  
 Grogin N.A., Kocevski D.D., Faber S.M., Ferguson H.C., Koekemoer A.M., Riess A.G., Acquaviva V., Alexander D.M., et al. 2011, *ApJS*, 197, 35  
 Illingworth G.D., Magee D., Oesch P.A., Bouwens R.J., Labbé I., Stiavelli M., van Dokkum P.G., Franx M., et al. 2013, *ApJ Suppl.*, 209, 6  
 Koekemoer A.M., Faber S.M., Ferguson H.C., Grogin N.A., Kocevski D.D., Koo D.C., Lai K., Lotz J.M., et al. 2011, *ApJS*, 197, 36  
 Kurk J., Cimatti A., Daddi E., Mignoli M., Pozzetti L., Dickinson M., Bolzonella M., Zamorani G., et al. 2013, *A&A*, 549, 63  
 Le Fèvre O., Vettolani G., Garilli B., Tresse L., Bottini D., Le Brun V., Maccagni D., Picat J.P., et al. 2005, *A&A*, 439, 845  
 Lehmer B.D., Brandt W.N., Alexander D.M., Bauer F.E., Schneider D.P., Tozzi P., Bergeron J., Garmire G.P., et al. 2005, *ApJS*, 161, 21  
 Madau P., Dickinson M. 2014, *ARA&A*, 52, 415  
 Momcheva I.G., Brammer G.B., van Dokkum P.G., Skelton R.E., Whitaker K.E., Nelson E.J., Fumagalli M., Maseda M.V., et al. 2016, (arXiv:15100.2106)  
 Morris A.M., Kocevski D.D., Trump J.R., Weiner B.J., Hathi N.P., Barro G., Dahlen T., Faber S.M., et al. 2015, *AJ*, 149, 178  
 Oke, J. B., & Gunn, J. E. 1983, *ApJ*, 266, 713  
 Planck Collaboration 2015 XIII, arxiv:150201589  
 Sargent M.T., Daddi E., Béthermin M., Aussel H., Magdis G., Hwang H.S., Juneau S., Elbaz D., da Cunha E., 2014, *ApJ*, 793, 19  
 Skelton R.E., Whitaker K.E., Momcheva I.G., Brammer G.B., van Dokkum P.G., Labbé I., Franx M., van der Wel A., et al. 2014, *ApJS*, 214, 24  
 Walter F., Decarli R., Carilli C., Bertoldi F., Cox P., da Cunha E., Daddi E., Dickinson M., et al., 2012, *Nature*, 486, 233  
 Weiß A., Downes D., Walter F., Henkel C., 2007, *ASPC*, 375, 25  
 Williams R.E., Blacker B., Dickinson M., Dixon W.V.D., Ferguson H.C., Fruchter A.S., Giavalisco M., Gilliland R.L., et al., 1996, *AJ*, 112, 1335



**Figure A1.** *Left:* Optical/NIR *HST* multi-color image centered on the line candidates discovered in the blind search at 3mm (using the F125W, F775W and F435W filters, (Illingworth et al. 2013)). *Middle:* CO contours of the candidate line maps resulting from our line search described in Sec. 3. Positive (negative) contours of the CO emission are plotted in solid black (dashed blue), where the contours mark the  $\pm 2, 3, 4, \dots$ - $\sigma$  isophotes ( $\sigma$  is derived from the respective line map). Each postage stamp is  $20'' \times 20''$  and the size of the synthesized beam is shown in the lower left. *Right:* spectrum of the line candidate. The blue shading marks the channels that the line-searching algorithm used to compute the line S/N (this is why the shading does not cover the entire width of the brightest source). All line parameters are summarized in Tab. 2.

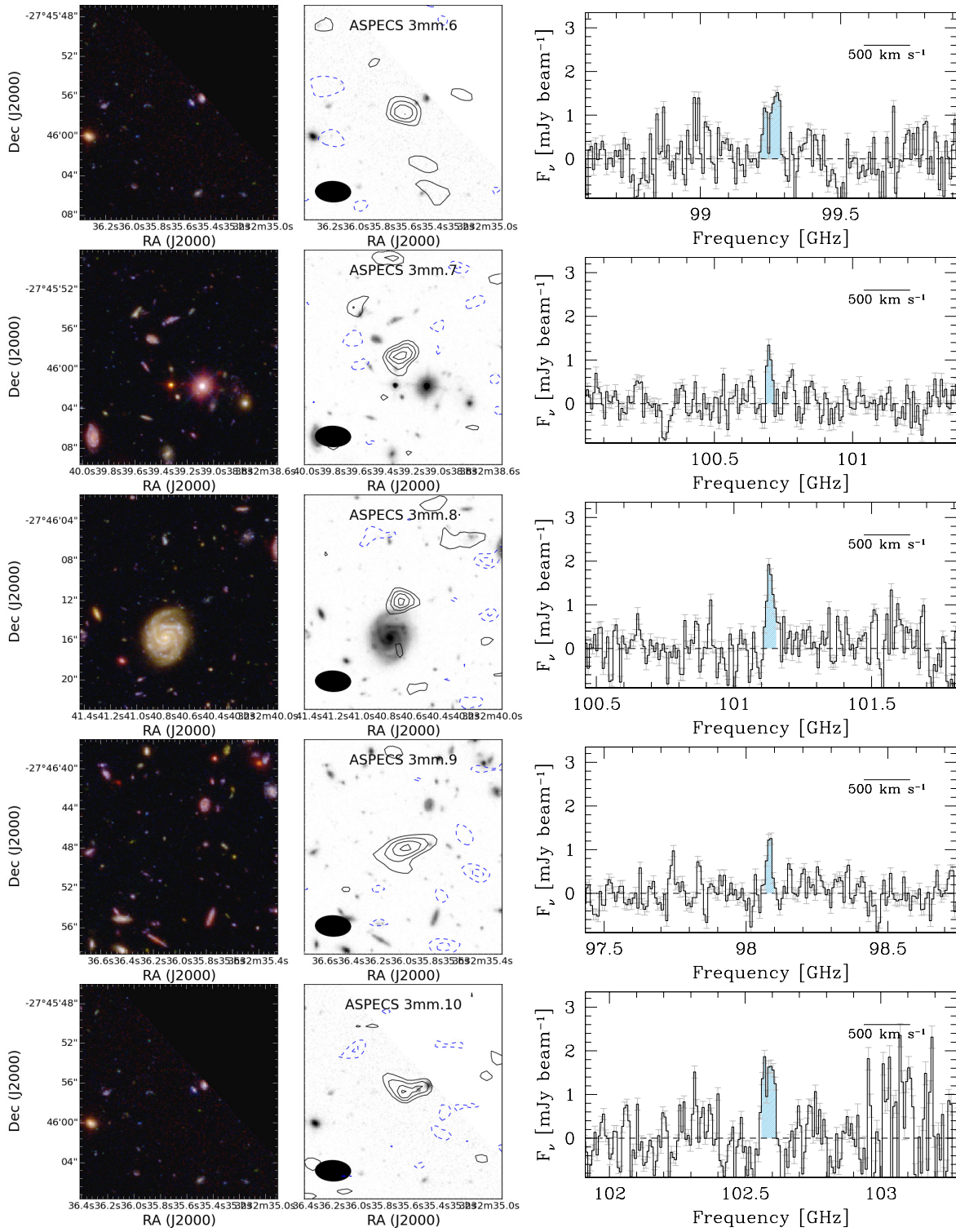
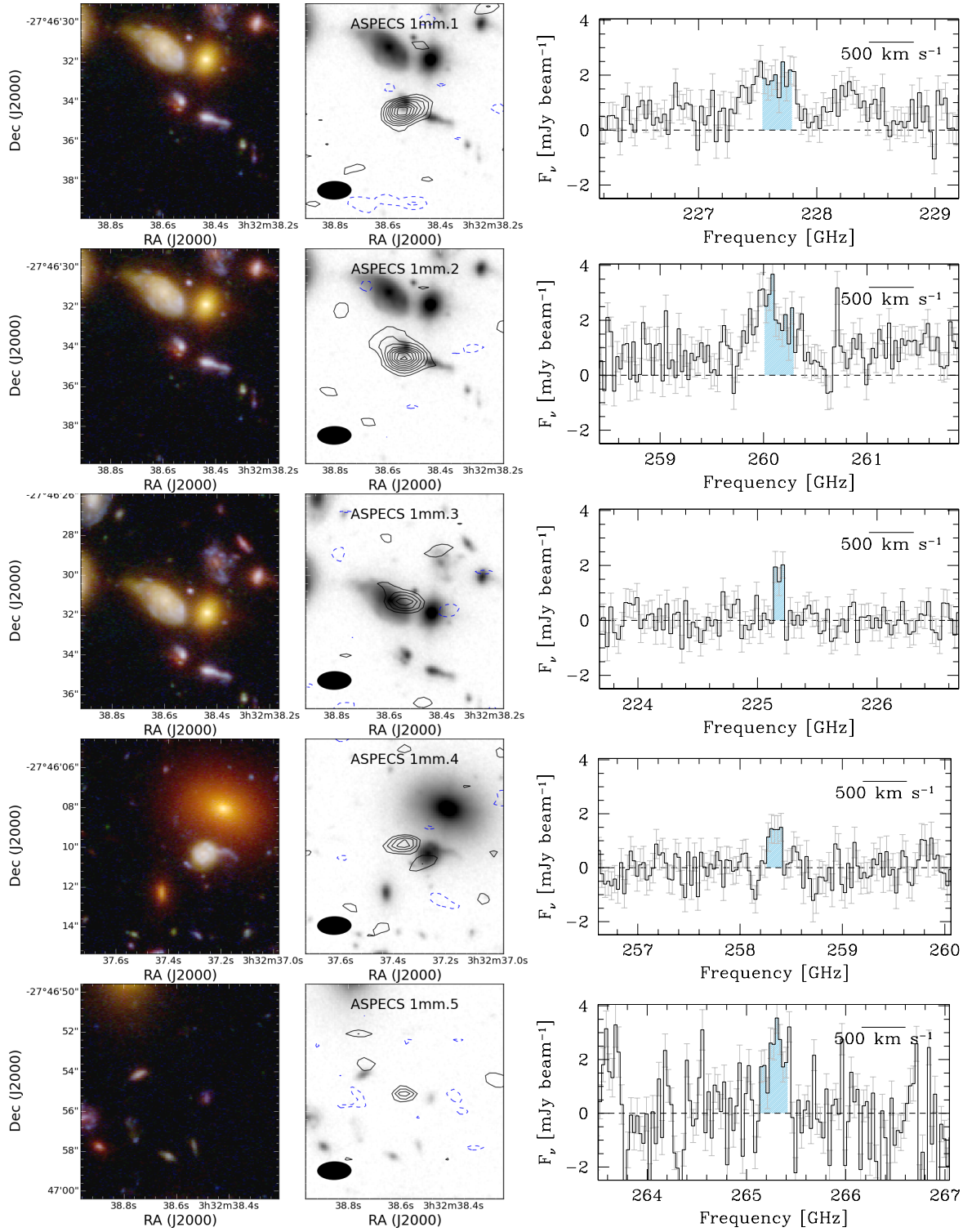


Figure A1. continued.



**Figure A2.** *Left:* Optical/NIR *HST* multi-color image centred on the line candidates discovered in the blind search at 1mm (using the F125W, F775W and F435W filters, (Illingworth et al. 2013)). *Middle:* Contours of the candidate line maps resulting from our line search described in Sec. 3. Positive (negative) contours are plotted in solid black (dashed blue), where the contours mark the  $\pm 2, 3, 4, \dots$ - $\sigma$  isophotes ( $\sigma$  is derived from the respective line map). Each postage stamp is  $20'' \times 20''$  and the size of the synthesized beam is shown in the lower left. *Right:* spectrum of the line candidate. The blue shading marks the channels that the line-searching algorithm used to compute the line S/N. All line parameters are summarized in Tab. 2.



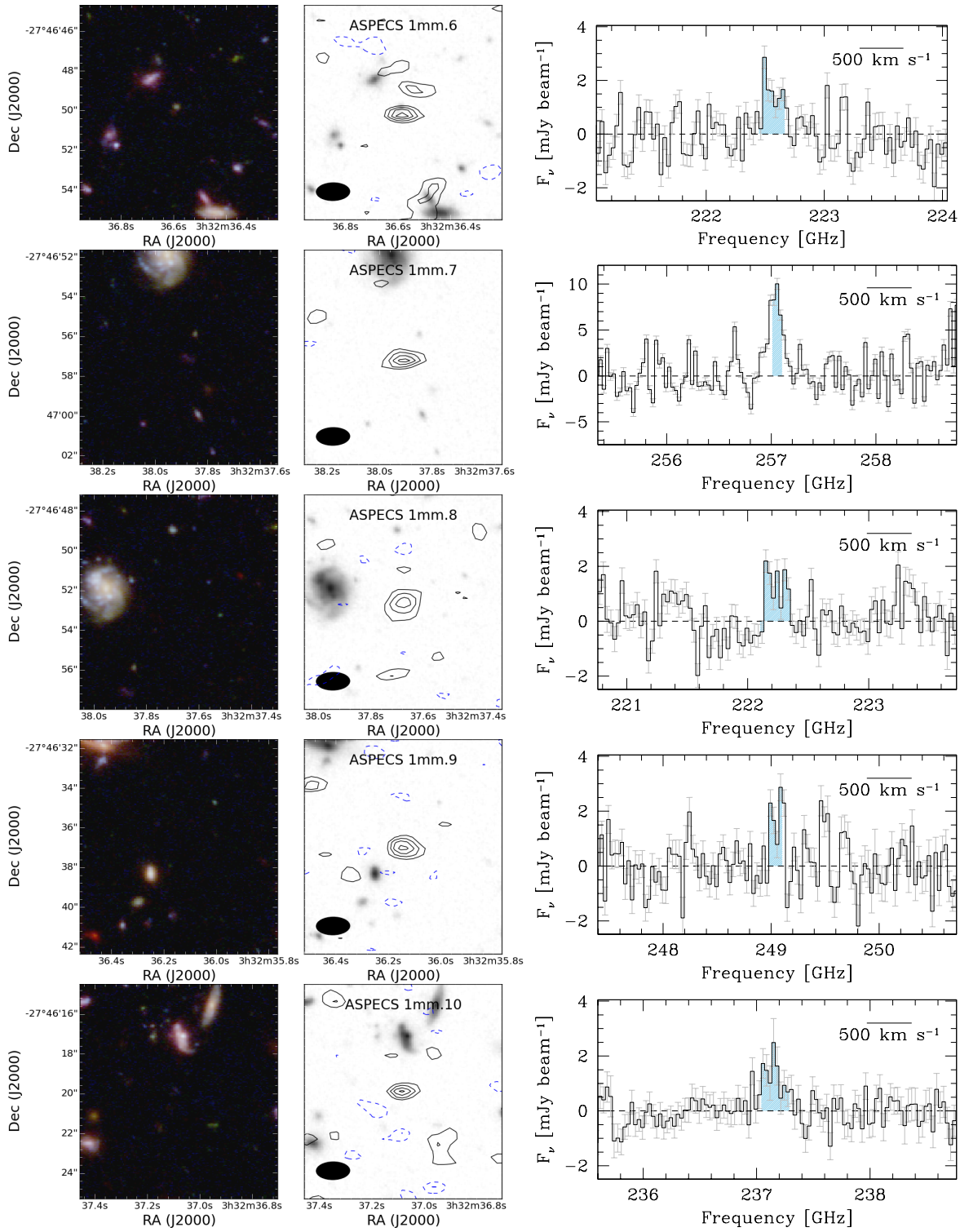


Figure A2. continued.

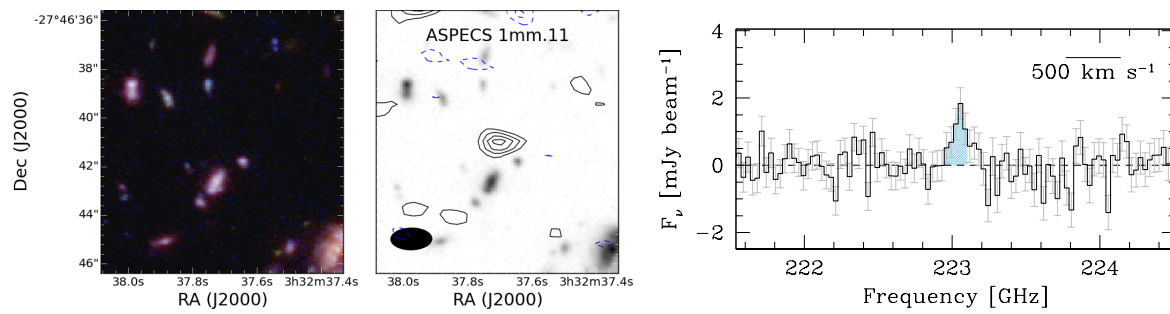


Figure A2. continued.